

Learning Kernel Hacking from Clever People

- A grab bag of hints & tips

CELF Embedded Linux Conference – US

16th April 2008

Hugh Blemings

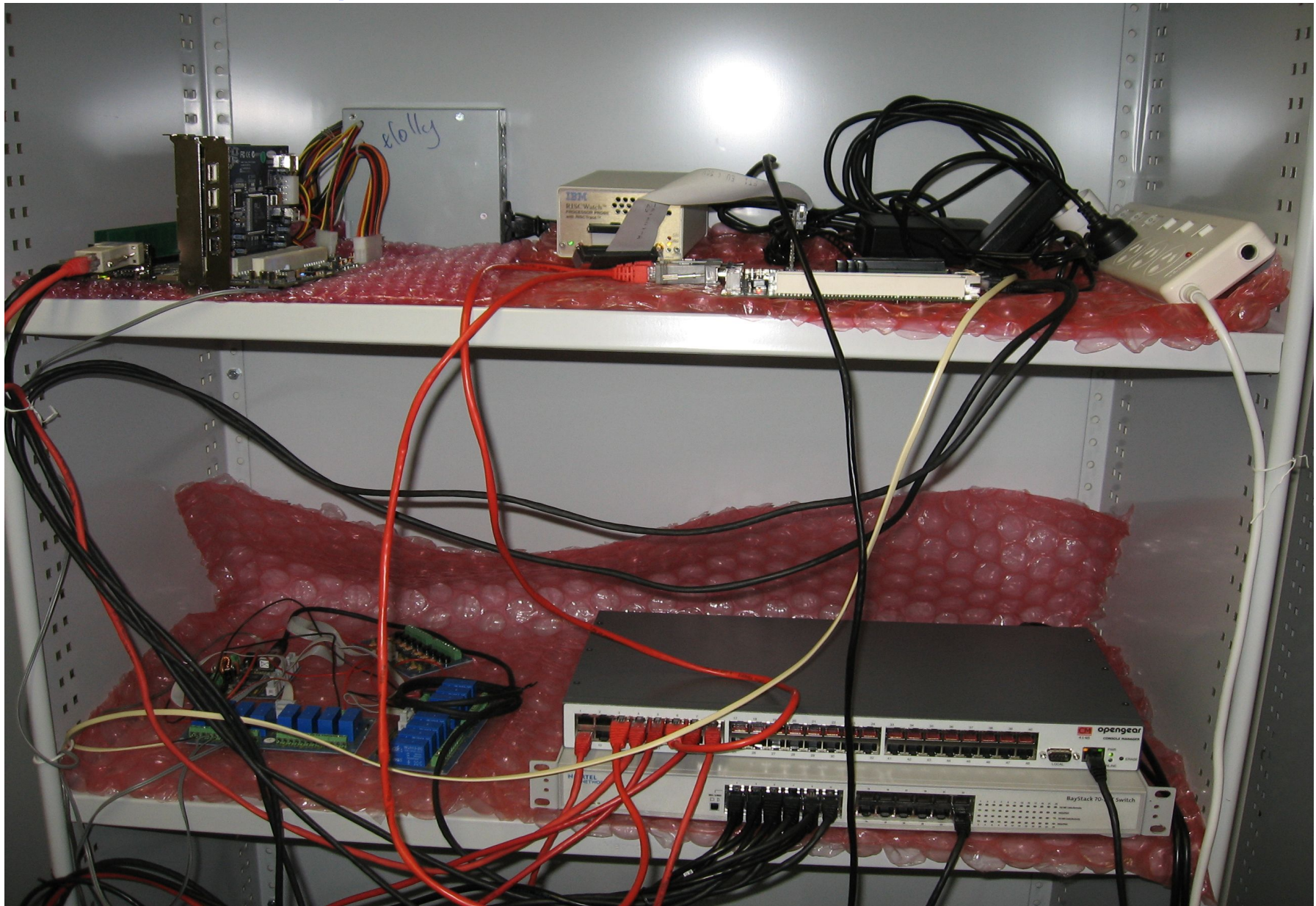
Introduction

- Who am I ?
 - Working on Free Software since mid '90s
 - My profession since 1997 :)
 - With OzLabs at IBM Linux Technology Centre since 2001
 - Mostly work on PowerPC “stuff”, particularly Linux
- What is this talk about ?
 - The tips and tricks used by experienced kernel/FOSS developers
 - I'm *not* an expert, but am fortunate to work with and know a number of them!
 - Based on own experiences with Taishan board port and suggestions solicited from colleagues
- Questions welcome at any time

Topics

- Hardware setup
- Early bringup
- Getting the kernel running
- Working with kernel source
- Building kernels
- Random datapoints & quotes

Hardware Setup



Hardware Setup (continued)



Hardware Setup (continued)

- Remote reset
- Remote power control
- Serial concentrators
- Ethernet hub / switches with “monitoring” port
- Local subnets / tftp servers
 - Sometime firmware has broken tftp/dhcp support
- In circuit debuggers
- Oscilloscope / LEDs

Early Bringup

- Simulators
- New hardware can have interesting “Features”
- Chicken Switches & Broken Things
- Ignoring firmware
 - Do some/all device initialisation yourself ?
- In memory console
- Device numbering fun
 - Linux thinks: eth0 and eth1
 - Hardware thinks: EMAC2 and EMAC3
 - PCB is labelled: Ethernet I and Ethernet II
 - You're not plugged in to any of them ?

Getting the kernel running

- Get it into memory
 - If necessary hack your bootloader to get something going
 - jtag or ICE trickery
- Some Gotchas
 - Kernel will re-initialise serial ports
 - Can lead you astray if divisors wrong or other registers incorrect
 - Don't forget `debug` on kernel command line...
 - Watch the right serial port...

Working with kernel source

- Getting a current tree
 - `git pull`
 - Matt Mackall's "ketchup"
- Visualising source tree & commits
 - `gitk`
- Finding bugs w/bisection search
 - `git bisect start`
 - `git bisect good v2.6.24`
 - `git bisect bad v2.6.25`
 - build resulting kernel
 - `git bisect good` or `git bisect bad` as appropriate
 - repeat
 - `git bisect reset`

Working with kernel source (continued)

- Quilt is wonderful
 - Modest learning curve time well spent
 - Tutorial would be a whole session in itself
- Keep work as patches
 - Makes tracking mainline much easier
 - Takes a bit of getting used to, but well worth effort
- Navigating tree
 - `etags` (emacs) or `ctags` (vi/vim)
- Generic diff visualisation
 - `dirdiff`

Building kernels

- You're going to do this a lot, so make it quick
 - Buy a honkin' big compile box
 - IBM p595 64 way POWER6
 - About 3k/s
 - Or borrow cycles
 - ccache
 - distcc
 - ccontrol
- Object code in separate tree to kernel source
 - `make O=../some-other-dir [...]`
 - Nice for keeping build cruft out of your source tree

Random Datapoints

- A neat conversion utility
 - `iprint`
- Inspect bit fields with ease
 - `bitfield`
- bash stuff
 - Curly brace expansion
 - `gcc -o foo{,.c}`
 - Command line completion
 - `/etc/bash.completion`
 - Time saving
 - `#for-really-long-command-lines`

Random Datapoints (continued)

- Man pages to read include
 - `lsof`
 - `x11vnc`
 - `screen -x`
- A Swiss Army knife
 - `LD_PRELOAD=/path/to/some/hack/i/made.so`

Random Quotes

- “When you have a hard problem, find a smart person to help you solve it”
 - paulus (paraphrased)
- “There are many cases where you don't need to check preconditions for things you're trying to do. Simplest example is opening a file. No need to `fstat(3)` a file to see if it exists before trying `fopen(3)`. `fopen(3)` will tell you if the file isn't there. Moreover, checking first can cause a race condition, especially if the file might disappear between the `fstat(3)` and the `fopen(3)`.”
 - Tridge (paraphrased)
- “Don't send email when drunk”
 - gkh (not paraphrased :)

Close

- Questions ?
- Thankyou to
 - Stephen Rothwell, Jeremy Kerr, Paul Mackerras, Tridge, Greg Kroah-Hartman, Michael Neuling, Ronnie Sahlberg, Matt Mackall, David Gibson and Martin Schwenke
- Contributions welcome
- Links will be in online version

Close

- Questions ?
- Thankyou to
 - Stephen Rothwell, Jeremy Kerr, Paul Mackerras, Tridge, Greg Kroah-Hartman, Michael Neuling, Ronnie Sahlberg, Matt Mackall, David Gibson and Martin Schwenke
- Contributions welcome
- Links will be in online version

- ▶ This work represents the view of the author and does not necessarily represent the view of IBM
- ▶ IBM, System i, System p, System x, System z, PowerPC, POWER, BladeCenter are trademarks or registered trademarks of International Business Machines Corporation in the United States, other countries, or both
- ▶ Cell Broadband Engine is a trademark of Sony Computer Entertainment Inc. in the United States, other countries, or both
- ▶ Linux is a registered trademark of Linus Torvalds
- ▶ Other company, product, and service names may be trademarks or service marks of others